



COSTUME
Solutions
The Ace Theatrical Costumier

Dame Costume Brochure

Scenery Solutions Trading Ltd, Unit 2 Barton Farm Industrial Estate, Chickenhall Lane, Eastleigh, SO50 6RP

Tel: 023 8064 1496 Email: enquiries@scenerysolutions.co.uk Website: www.scenerysolutions.co.uk



**Red & Blue Striped
Cotton Dress**
Bust- 52"
Waist- 48"
Asset No: 1



**Purple & Silver Sequin
Sleeveless Dress**
Bust- 52"
Waist- 54"
Asset No: 2



**Pink & Gold Long Sleeve
Dress**
Bust- 52"
Waist- 56"
Asset No: 3



**Orange & Green Print
Cotton Dress**
Bust- 49"
Waist- 42"
Asset No: 4



**Turquoise Sleeveless
Satin Dress**
Bust- 46"
Waist- 45"
Asset No: 5

Items supplied are always size dependant and we cannot guarantee that the costumes shown on this page will look identical if altered. Sizes listed are maximum sizes and items supplied should be checked if they are suitable for the cast members cast in your production.



**Black & Turquoise
Sequin Jacket (Shown
over dress no. 5)**
Bust- 50"
Waist- 48"
Asset No: 6



**Turquoise Sequin Short
Sleeve Dress**
Bust- 50"
Waist- 41"
Asset No: 7



**Dark Blue Net Dress
with Sequins**
Bust- 48"
Waist- 42"
Asset No: 8



**Pale Blue Net Dress
with Sequins**
Bust- 52"
Waist- 46"
Asset No: 9



**Gold Sequin Dress with
Striped Embellishment**
Bust- 48"
Waist- 46"
Asset No: 10

Items supplied are always size dependant and we cannot guarantee that the costumes shown on this page will look identical if altered. Sizes listed are maximum sizes and items supplied should be checked if they are suitable for the cast members cast in your production.



**Blue & Silver Sequin
Sleeveless Dropped Waist
Dress**
Bust- 58"
Waist- 56"
Asset No: 11



**Black/White Check & Red
Dress with Net
Underskirt**
Bust- 48"
Waist- 48"
Asset No: 12



**Multicoloured Sequin
Rainbow Dress**
Bust- 49"
Waist- 44"
Asset No: 13



**Multicoloured Harlequin
Long Sleeve Dress**
Bust- 48"
Waist- 46"
Asset No: 14



**Pink & White
Spot/Stripe/Check Dress**
Bust- 54"
Waist- 54"
Asset No: 15

Items supplied are always size dependant and we cannot guarantee that the costumes shown on this page will look identical if altered. Sizes listed are maximum sizes and items supplied should be checked if they are suitable for the cast members cast in your production.



**Blue Liquorice Allsorts &
Orange Stripe Dress**

Bust- 50"
Waist- 46"
Asset No: 16



**Orange with White Spots
Short Sleeve Dress**

Bust- 52"
Waist- 44"
Asset No: 17



**Purple Velvet, Silver &
Gold Long Sleeve Dress**

Bust- 58"
Waist- 54"
Asset No: 18



**Gold Sequin, Cream & Gold
Dress with Yellow Feathers**

Bust- 48"
Waist- 44"
Asset No: 19



**Multicoloured Striped
Long Sleeve Dress**

Bust- 52"
Waist- 44"
Asset No: 20

Items supplied are always size dependant and we cannot guarantee that the costumes shown on this page will look identical if altered. Sizes listed are maximum sizes and items supplied should be checked if they are suitable for the cast members cast in your production.



**Gold, multicoloured & Red
Sequin Dress Purple Feathers**
Bust- 48"
Waist- 44"
Asset No: 21



**Purple Kaftan Style Robe
with Blue & Pink Trim**
Bust- 52"
Waist- 52"
Asset No: 22



**White with Black Spots &
Stripes Long Sleeve Dress**
Bust- 50"
Waist- 46"
Asset No: 23



**Blue & Silver Patterned
Long Sleeve Dress**
Bust- 54"
Waist- 48"
Asset No: 24



**2 Piece- Yellow Dress & Multicoloured
Striped Jacket**
Dress- Bust- 52"
Waist- 48"
Jacket- Bust- 54"
Waist- 50"
Asset No: 25

Items supplied are always size dependant and we cannot guarantee that the costumes shown on this page will look identical if altered. Sizes listed are maximum sizes and items supplied should be checked if they are suitable for the cast members cast in your production.



**Gold & Blue Print Robe
with Poppers Down Front**

Freesize
Asset No: 26



**Multicoloured Diamond
Pattern Long Sleeve Dress**

Bust- 54"
Waist- 50"
Asset No: 27



**Pink & Black Satin Dress
with Black Pompoms**

Bust- 48"
Waist- 44"
Asset No: 28



**Pink & Orange Sleeveless
Dress**

Bust- 50"
Waist- 46"
Asset No: 3651



**Pink with White Spots
Long Sleeve Dress**

Bust- 50"
Waist- 46"
Asset No: 3652

Items supplied are always size dependant and we cannot guarantee that the costumes shown on this page will look identical if altered. Sizes listed are maximum sizes and items supplied should be checked if they are suitable for the cast members cast in your production.



Seaside Print Long Sleeve Dress

Bust- 50"

Waist- 46"

Asset No: 3656



Yellow & Multicoloured Stripe Long Sleeve Dress with Spotty Waist Tie

Bust- 50"

Waist- 46"

Asset No: 3658



Leopard Print One Shoulder Short Dress

Bust- 50"

Waist- 48"

Asset No: 3660

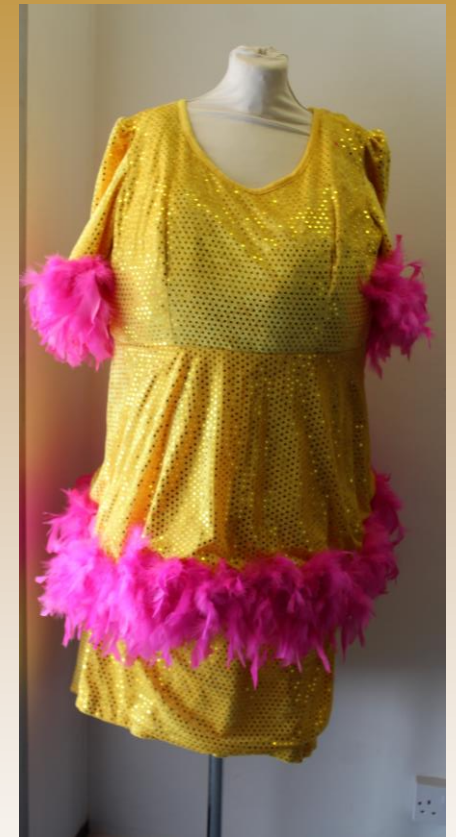


Blue Sleeveless Dress with Black & Silver Trim

Bust- 52"

Waist- 50"

Asset No: 3661



Yellow Sequin Dress with Pink Feather Trim

Bust- 44"

Waist- 36"

Asset No: 3662

Items supplied are always size dependant and we cannot guarantee that the costumes shown on this page will look identical if altered. Sizes listed are maximum sizes and items supplied should be checked if they are suitable for the cast members cast in your production.



**Blue Sequin Rainbow
Dress**

Bust- 46"
Waist- 44"
Asset No: 3663



**Orange & Pink Sleeveless Dress (2
Available)**

Dress 1 Dress 2
Bust- 56" Bust- 34"
Waist- 54" Waist- 30"
Asset No: 3664



**Black & Green Joker
Card Print Dress**

Bust- 50"
Waist- 46"
Asset No: 3665



Long Tiger Print Fur Coat

Bust- 52"
Waist- 52"
Asset No: 3666



**'Vanish' Embellished
Pink Eastern Style Dress**

Bust- 52"
Waist- 58"
Asset No: 3667

Items supplied are always size dependant and we cannot guarantee that the costumes shown on this page will look identical if altered. Sizes listed are maximum sizes and items supplied should be checked if they are suitable for the cast members cast in your production.



Pink & White Striped & Spotty Short Sleeve Dress

Bust- 48"

Waist- 44"

Asset No: 3668



2 Piece- Black Spotty Satin Bloomers & Green Spotty Sleeveless Top with 'M' Embellishment

Bust- 54"

Waist- 44"

Asset No: 3671



Strappy Red Dress with Daffodil & Leek on Front

Bust- 46"

Waist- 46"

Asset No: 3672



Union Jack Print Long Sleeve Dress

Bust- 54"

Waist- 48"

Asset No: 3673



Orange Velvet Dress with Large Tassels on Sleeves

Bust- 58"

Waist- Freesize

Asset No: 3675

Items supplied are always size dependant and we cannot guarantee that the costumes shown on this page will look identical if altered. Sizes listed are maximum sizes and items supplied should be checked if they are suitable for the cast members cast in your production.



Strappy Sparkly Red & Silver Sequin Dress

Bust- 46"

Waist- 46"- Straight Design

Asset No: 3676



2 Piece- Khaki Safari Style Jacket with Orange Flower Emblem, Matching Skirt & Orange Belt

Bust- 52"

Waist- 42"

Asset No: 3680



2 Piece- Purple & Pink Short Dress with Purple Bloomers

Dress- Bust- 50"

Waist- 42"

Bloomers-Waist- 60"+

Asset No: 3683



2 Piece- Yellow Striped & Red Spotty Top with Matching Trousers

Bust- 50"

Waist- 46"

Asset No: 3686



Blue Frilled Dress with Silver Trim

Pending Measurements

Asset No: 3688

Items supplied are always size dependant and we cannot guarantee that the costumes shown on this page will look identical if altered. Sizes listed are maximum sizes and items supplied should be checked if they are suitable for the cast members cast in your production.



Blue and Silver Sequin Straight Dress with Frilled Lower Half
Bust- 52"
Waist- 46"
Asset No: 3689



Iridescent Square Patterned Dress with Feather Trim
Bust- 54"
Waist- 50"
Asset No: 3690



Pink Dress with Pink Fur & Silver Trim
Bust- 50"
Waist- 48"
Asset No: 3691



Red, Black & Silver Satin Dress
Bust- 50"
Waist- 46"
Asset No: 3692



Purple & Green Satin Dress with Orange Trim
Bust- 46"
Waist- 40"
Asset No: 3693

Items supplied are always size dependant and we cannot guarantee that the costumes shown on this page will look identical if altered. Sizes listed are maximum sizes and items supplied should be checked if they are suitable for the cast members cast in your production.



**Yellow, Green & Multicoloured
Stripe Long Sleeve Dress**
Bust- 54"
Waist- 50"
Asset No: 3694



**Orange Stripe/Yellow
Spotty/Green Long Sleeve Dress**
Bust- 56"
Waist- 56"
Asset No: 3695



**Orange Stripe/Yellow Spotty/Red
Check Long Sleeve Dress**
Bust- 56"
Waist- 52"
Asset No: 3696



**Green Sequin Long Sleeve Dress with
Skin Tone Material on Chest and Sleeves**
Bust- 52"
Waist- 46"
Asset No: 3697



**Multicoloured Stripe and Pink
Satin Long Sleeve Dress**
Bust- 52"
Waist- 46"
Asset No: 3698

Items supplied are always size dependant and we cannot guarantee that the costumes shown on this page will look identical if altered. Sizes listed are maximum sizes and items supplied should be checked if they are suitable for the cast members cast in your production.



**Shiny Purple & Gold Velcro Front
Robe with Purple & Yellow Trim**
Bust- 50"
Waist- 54"
Asset No: 3699



**Green Spotty Dress with White &
Orange Belt, White & Orange Frilled
Cape**
Bust- 52"
Waist- 46"
Asset No: 3703



Mustard Long Sleeve Gown
Bust- 54"
Waist- 47"
Asset No: 3704



**Pink & Silver Cape with Feather
Trim (3 Available)**
Freesize
Asset No: 3705



**Pink and Yellow Frilled Short
Dress**
Bust- 50"
Waist- 44"
Asset No: 3706

Items supplied are always size dependant and we cannot guarantee that the costumes shown on this page will look identical if altered. Sizes listed are maximum sizes and items supplied should be checked if they are suitable for the cast members cast in your production.



**Gold Spotty & Yellow Satin Dress
with Gold Belt**
Bust- 50"
Waist- 46"
Asset No: 3709



**Orange & Blue Patterned Long
Sleeve Dress**
Bust- 48"
Waist- 45"
Asset No: 3710



**Green Patterned Long Sleeve
Dress with Blue Trim**
Bust- 48"
Waist- 46"
Asset No: 3711



**White Flower Print Long Sleeve
Dress**
Bust- 52"
Waist- 46"
Asset No: 3712



**Red & Black Stripe/White
Leopard Print Long Sleeve Dress**
Bust- 48"
Waist- 48"
Asset No: 3713

Items supplied are always size dependant and we cannot guarantee that the costumes shown on this page will look identical if altered. Sizes listed are maximum sizes and items supplied should be checked if they are suitable for the cast members cast in your production.



**Green, Yellow & Purple Check
Short Dress**
Bust- 48"
Waist- 44"
Asset No: 3714



**Red Stripe & Pale Blue Long
Sleeve Dress with Net Underskirt**
Bust- 50"
Waist- 48"
Asset No: 3715



**Pink Sequin Long Sleeve Dress
with Pink Frill at Hem**
Bust- 52"
Waist- 46"
Asset No: 3716



**Blue Check & Yellow Long Sleeve
Dress**
Bust- 52"
Waist- 51"
Asset No: 3717



**Pink Sequin Dress with Pink Frill
to Hem & Sleeves**
Bust- 52"
Waist- 46"
Asset No: 3718

Items supplied are always size dependant and we cannot guarantee that the costumes shown on this page will look identical if altered. Sizes listed are maximum sizes and items supplied should be checked if they are suitable for the cast members cast in your production.

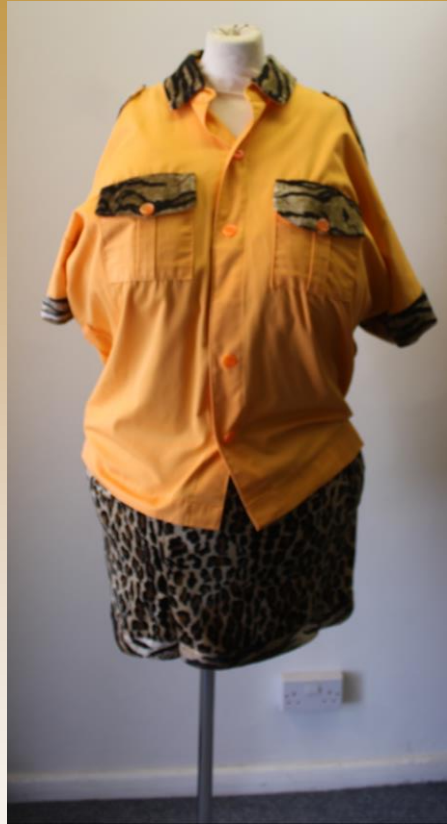


**Green & Black Stripe/White
Leopard Print Long Sleeve Dress**

Bust- 49"

Waist- 49"

Asset No: 3719



**2 Piece- Leopard Print Skirt with
Orange Safari Style Shirt**

Bust- 56"

Waist- 48"

Asset No: 3721



**Orange, Pink & Turquoise Fish
Print Long Sleeve Dress**

Bust- 56"

Waist- 54"

Asset No: 3723



**Silver Sequin Strappy Dress With
White Bow on Rear**

Bust- 52"

Waist- 50"

Asset No: 3724



**Silver Holographic Sequin Dress
With White Feather Trim**

Bust- 52"

Waist- 48"

Asset No: 3725

Items supplied are always size dependant and we cannot guarantee that the costumes shown on this page will look identical if altered. Sizes listed are maximum sizes and items supplied should be checked if they are suitable for the cast members cast in your production.



**Gold Holographic Sequin Dress
with Red Feather Trim**
Bust- 54"
Waist- 52"
Asset No: 3726



Gold & Black Stripe Sequin Robe
Bust- 50"
Waist- 44" Min
Asset No: 3727



**Turquoise/ Blue & Gold Reversible
Sleeveless Robe- Open Fronted**
Freesize
Asset No: 3728



**Blue & Red Lycra Superhero Dress
with Blue & Gold Cape**
Bust- 60"
Waist- 60"
Asset No: 3730



**Blue & Gold Sequin Flower
Pattern 2 Piece Dress**
Bust- 54"
Waist- 42"
Asset No: 3733

Items supplied are always size dependant and we cannot guarantee that the costumes shown on this page will look identical if altered. Sizes listed are maximum sizes and items supplied should be checked if they are suitable for the cast members cast in your production.



**Turquoise Sequin Skirt with Waterfall
Rear with Turquoise Net & Shimmer
Fabric Dress**
Bust- 46"
Waist- 41"
Asset No: 3735



**Yellow 'Fish & Chips' Long
Sleeve Dress with Food
Appliqué to Hem**
Bust- 54"
Waist- 52"
Asset No: 3737



**2 Piece- Purple Trousers with Shoulder
Straps with Purple Chiffon Short Sleeve
Robe with Pink Feather Trim**
Bust- 58"
Waist- 64"
Asset No: 3739



**Car Print & Red Stripe Long
Sleeve Dress**
Bust- 50"
Waist- 49"
Asset No: 3741



**Multicoloured Stripes, Gold &
Blue Long Dress**
Bust- 48"
Waist- 44"
Asset No: 3745

Items supplied are always size dependant and we cannot guarantee that the costumes shown on this page will look identical if altered. Sizes listed are maximum sizes and items supplied should be checked if they are suitable for the cast members cast in your production.



**Ragged Blue and White Stripe Dress
with Ragged Matching Bloomers
(Dick Whittington After Shipwreck)**
Bust- 54"
Waist- 54"
Asset No: 3743

**Blue and White Striped Dress
(Dick Whittington Before
Shipwreck)**
Bust- 54"
Waist- 54"
Asset No: 3744

**Red & Blue Striped Long Sleeve
Dress**
Bust- 48"
Waist- 45"
Asset No: 3746

**Blue & Yellow Long Sleeve Dress
with Flower Applique**
Bust- 52"
Waist- 47"
Asset No: 3747

**Purple, Green & Patchwork
Long Sleeve Dress**
Bust- 47"
Waist- 47"
Asset No: 3748

Items supplied are always size dependant and we cannot guarantee that the costumes shown on this page will look identical if altered. Sizes listed are maximum sizes and items supplied should be checked if they are suitable for the cast members cast in your production.



**Green, Blue & Pink Flower Print
Long Sleeve Dress**
Bust- 54"
Waist- 50"
Asset No: 3749



**Yellow, Pink & Pastel Stripe Long
Sleeve Dress with Matching Tie**
Collar
Bust- 50"
Waist- 47"
Asset No: 3751



**Green & Black Check & Orange
Long Sleeve Dress**
Bust- 50"
Waist- 45"
Asset No: 3753



Red Dragon Print Kimono
Bust- 54"
Asset No: 3754



**Purple, Yellow & Multicoloured
Check Long Sleeve Dress**
Bust- 55"
Waist- 48"
Asset No: 3755

Items supplied are always size dependant and we cannot guarantee that the costumes shown on this page will look identical if altered. Sizes listed are maximum sizes and items supplied should be checked if they are suitable for the cast members cast in your production.



**Pink Number Print & Pastel
Check Long Sleeve Dress**

Bust- 52"
Waist- 50"
Asset No: 3756



**Pink Silk Dress with Striped
Front & Pointed Sleeves**

Bust- 52"
Waist- Freesize
Asset No: 3757



**Blue & Gold Popper Front Robe
with Matching Attached Cape**

Bust- 52"
Waist- 54"
Asset No: 3758



**Yellow & Flower Pattern Long
Sleeve Dress**

Bust- 48"
Waist- 48"
Asset No: 3759



**Red, Yellow & Clown Pattern
Dress with Striped Coloured Skirt**

Bust- 52"
Waist- 48"
Asset No: 3760

Items supplied are always size dependant and we cannot guarantee that the costumes shown on this page will look identical if altered. Sizes listed are maximum sizes and items supplied should be checked if they are suitable for the cast members cast in your production.



**Orange, Pink, Green & Red
Striped & Spotty Short Dress**
Bust- 38"
Waist- 34"
Asset No: 3761



**Orange & Silver Pattern Roman
Style Dress with Orange
Reversible Cape**
Bust- 42"
Asset No: 3762



**Multicolour Spotty Peplum Top,
Red & Spotty Bloomers & Red
Spotty Bow Headband**
Bust- 52"
Waist- 44"
Asset No: 3763



**Red & White Stripe Sailor Dress
with Collar and Frilly Hem**
Bust- 50"
Waist- 47"
Asset No: 3768



**Navy & White Stripe Nurses Short
Dress with Detachable Apron**
Bust- 50"
Waist- 48"
Asset No: 3769

Items supplied are always size dependant and we cannot guarantee that the costumes shown on this page will look identical if altered. Sizes listed are maximum sizes and items supplied should be checked if they are suitable for the cast members cast in your production.



**Turquoise & Gold Long Dress
with Short Sleeves**
Bust- 52"
Waist- 48"
Asset No: 3770



**Cerise Sequin Cape with Yellow
Lining (2 Available)**
Freesize
Asset No: 3774



**Black, Silver & Pink Striped Satin
Dress with Pink Feather Trim**
Bust- 48"
Waist- 44"
Asset No: 3775



**Purple Empire Line Long Dress
with Fluffy White Trim**
Bust- 54"
Waist- 48"
Asset No: 3776



**Multicoloured Flower Print Dress
with Detachable Yellow Rigid Collar**
Bust- 50"
Waist- 48"
Asset No: 3777

Items supplied are always size dependant and we cannot guarantee that the costumes shown on this page will look identical if altered. Sizes listed are maximum sizes and items supplied should be checked if they are suitable for the cast members cast in your production.



**2 Piece- Purple & Yellow Short
Dress with Purple & Pink Bloomers**

Bust- 49"

Waist- 45"

Asset No: 3781



**Green Bodice Dress with Pink
Chiffon Sleeves & Skirt**

Bust- 48"

Waist- 44"

Asset No: 3784



**Red Check, Orange Spotty & Green
Stripe Long Sleeve Dress**

Bust- 48"

Waist- 42"

Asset No: 3786



**Navy Dress with Red & White
Trim and White Collar**

Bust- 46"

Waist- 40"

Asset No: 3787



**'All in One' Yellow Trousers with
Shoulder Straps**

Bust- 54"

Waist- 56"

Asset No: 3788

Items supplied are always size dependant and we cannot guarantee that the costumes shown on this page will look identical if altered. Sizes listed are maximum sizes and items supplied should be checked if they are suitable for the cast members cast in your production.



Red Sleeveless Dress with Net Underskirt
Bust- 48"
Waist- 45"
Asset No: 3789



Orange Sleeveless Dress with Black Trim & Net Underskirt
Bust- 52"
Waist- 48"
Asset No: 3790



Drop Waist Sleeveless 60s Print Dress
Bust- 52"
Waist- 48"
Asset No: 3791



2 Piece- Orange & Silver Short Dress with Orange Sequin Bloomers
Bust- 50"
Waist- 42"
Asset No: 3793



'Multicoloured Patterned Full Length Apron
Freesize
Asset No: 3795

Items supplied are always size dependant and we cannot guarantee that the costumes shown on this page will look identical if altered. Sizes listed are maximum sizes and items supplied should be checked if they are suitable for the cast members cast in your production.



Stars & Stripes Print Bootcut Trousers (Matching Top Available)

Waist- 42"

Asset No: 3797



Red & Blue Spotty Dress with Multicoloured Spotty Skirt

Bust- 52"

Waist- 46"

Asset No: 3800



Orange Chiffon & Pink Patterned Robe (Matches Dress 3664)

Free size

Asset No: 3801



Dinosaur Print Dress with Attached Green & Gold Patterned Coat with Green Cape

Bust- 50"

Waist- 46"

Asset No: 3805



Wide Fur Collar and Trim

Bust- 52"

Waist- 46"

Asset No: 3806

Items supplied are always size dependant and we cannot guarantee that the costumes shown on this page will look identical if altered. Sizes listed are maximum sizes and items supplied should be checked if they are suitable for the cast members cast in your production.



**Fluorescent Yellow & Gold Sequin
Dress with Waterfall Hem**

Bust- 53"

Waist- 48"

Asset No: 3808



**Orange 60s Style Robe with
Patterned Collar**

Bust- 60"

Waist- 66"

Asset No: 3809



**White & Pink Spotty/Stripy Dress
with Pink Fur Trim**

Bust- 51"

Waist- 44"

Asset No: 3810



**Bob the Builder Patterned Yellow
Long Sleeve Dress**

Bust- 50"

Waist- 46"

Asset No: 3811



**Yellow Plastic Raincoat with Cloud
& Umbrella Applique**

Bust- 60"

Asset No: 3813

Items supplied are always size dependant and we cannot guarantee that the costumes shown on this page will look identical if altered. Sizes listed are maximum sizes and items supplied should be checked if they are suitable for the cast members cast in your production.



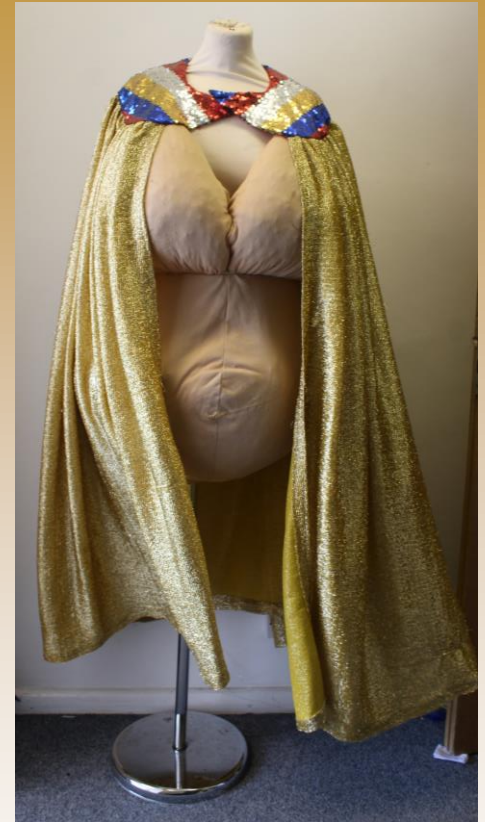
Tiered Red Net Underskirt
Waist- 30"-40"
Asset No: 3814



Yellow Chiffon Robe with Pink Trim
Freesize
Asset No: 3815



Yellow Chiffon Robe with Red Feather Trim
Freesize
Asset No: 3816



Gold Cape with Multicoloured Sequin Collar
Freesize
Asset No: 3817

Items supplied are always size dependant and we cannot guarantee that the costumes shown on this page will look identical if altered. Sizes listed are maximum sizes and items supplied should be checked if they are suitable for the cast members cast in your production.



**Turquoise Diamond Sequin Cape
with White Feather Trim**
Freesize
Asset No: 3818



**Green Patterned & Blue Sleeveless
Dress/Nightie with Matching Robe**
Freesize
Asset No: 3822



**Yellow Hawaii Pattern Top with
Matching Bloomers**
Bust- 46"
Waist- 42"
Asset No: 3825

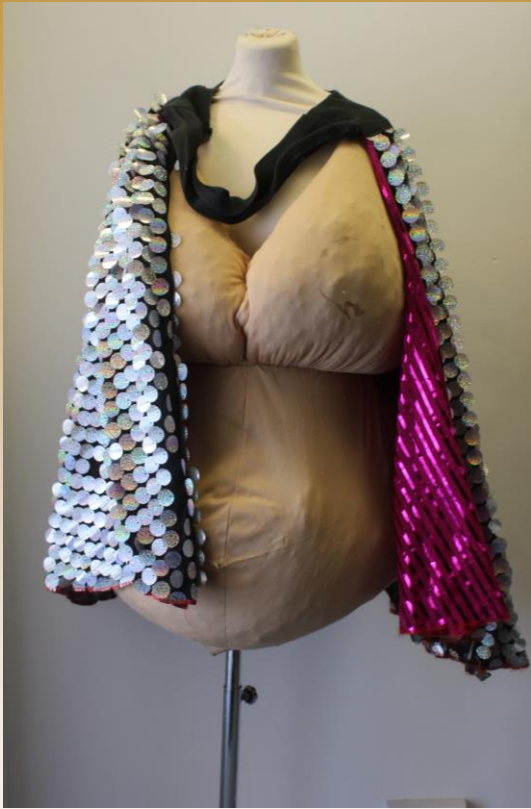


**Yellow Leopard Print Sleeveless
Short Dress with Feather Trim**
Bust- 50"
Waist- 56"
Asset No: 3826



Plain Gold Satin Sleeveless Dress
Bust- 47"
Waist- 44"
Asset No: 3827

Items supplied are always size dependant and we cannot guarantee that the costumes shown on this page will look identical if altered. Sizes listed are maximum sizes and items supplied should be checked if they are suitable for the cast members cast in your production.



Reversible Holographic Silver & Pink Sequin Cape
Freesize
Asset No: 3828



White & Black Striped/White & Red Spotty Top with Matching Bloomers
Bust- 54"
Waist- 44"
Asset No: 3830



Orange & Black Spotty Dress with Red Fur Trim
Bust- 48"
Waist- 44"
Asset No: 3831



Yellow Eastern Style Top with Dropped Shoulders with Matching Bloomers
Bust- 60"
Waist- 56"
Asset No: 3833



Stars and Stripes Satin Top with Red Collar (Matching Trousers Available)
Bust- 50"
Waist- 44"
Asset No: 3825

Items supplied are always size dependant and we cannot guarantee that the costumes shown on this page will look identical if altered. Sizes listed are maximum sizes and items supplied should be checked if they are suitable for the cast members cast in your production.



**Pink Felt Peplum Top with Black
Collar and Cuffs**

Bust- 50"

Waist- 46"

Asset No: 3836



**Turquoise Star Print Button Through
Robe with Tapered Sleeves**

Bust- 48"

Waist- 47"

Asset No: 3837

Items supplied are always size dependant and we cannot guarantee that the costumes shown on this page will look identical if altered. Sizes listed are maximum sizes and items supplied should be checked if they are suitable for the cast members cast in your production.



COSTUME
Solutions
The Ace Theatrical Costumier

As a leading supplier of Costumes, Wigs and accessories Costume Solutions is a subsidiary of Scenery Solutions Trading Ltd

Scenery Solutions are able to supply Set, Props, Backcloths, additional steel deck and legs, stage weights, tab track and dollies, and cloth clips for any of your shows. We also stock a large quantity of music stands and lights.

Along with over 100 full stage sets, we have over 1,500 backcloths, gauzes and tabs available to hire covering all your show needs. Our props store houses over 7,500 props for all your show and event requirements. Contact us today for more information!

Scenery Solutions Trading Ltd, Unit 2 Barton Farm Industrial Estate, Chickenhall Lane, Eastleigh, SO50 6RP

Tel: 023 8064 1496 Email: enquiries@scenerysolutions.co.uk Website: www.scenerysolutions.co.uk